

## Venue

### OSKAR VON MILLER FORUM

Oskar-von-Miller-Ring 25, 80333 München

(right in the Center of Munich, a 5 minute walk from metro station: Odeonplatz)

## Travel Information

Munich is accessible by plane or train from nearly all destinations. The airport Munich is about 40 km north from the city. Best way to the city is via train. Train service is regularly going from the airport to main station.

## Accommodation

For hotel booking see:

<http://www.muenchen.de/int/en/tourism.html>

<http://www.hrs.com>

## Registration

Participants are requested to return the completed registration form received together with the invitation or via "<http://www.vgb.org/en/euro-coalash2014.html>" by October 1, 2014. We will confirm the registration by mailing the invoice. The participation ticket will be handed over at the workshop office. A later registration is possible, also at the conference office. Please mention the company's invoice address with all necessary data!

VGB PowerTech e.V.

Ines Moors

POB 10 39 32

D-45143 Essen

phone.: +49 201 8128 – 274

fax: +49 201 8128 – 364

email: [ines.moors@vgb.org](mailto:ines.moors@vgb.org)

## Attendance

Attendance fee

€ 150

Attendance fee university staff

€ 60

Attendance fee for parties also participating EUROCOALASH

€ 100

It is not possible to accept credit cards or currency at the conference office.

The attendance fee includes coffee and beverages as well as lunch buffet during the workshop. The presentations will be made available after the workshop.

## For further Information:

VGB PowerTech e.V.

Klinkenstr. 27-31, D-45136 Essen

Phone: +49 201 8128 274

Email: [ines.moors@vgb.org](mailto:ines.moors@vgb.org)

Co-Organiser:

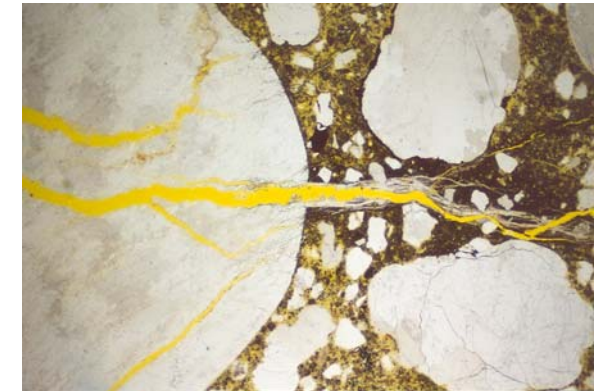
CBM of the Technical University Munich



## RESEARCH WORKSHOP

### Durability of Fly Ash Concrete

#### Invitation



October 13, 2014

Munich, Germany

Organized by:



The ECOBA Research Workshop aims in information of existing and ongoing research work as well as in bridging gaps of knowledge for beneficial CCP utilisation in the different European member states. The Research Workshop "Durability of Fly Ash Concrete" is organised to allow mainly face to face discussions of especially young researchers about ongoing or recently finished research projects on durability aspects for fly ash concrete.

In some countries fly ash is used in concrete for more than 50 years. This large degree of practical experience has been accompanied by continuous research work on quality, applicability, properties and durability. In some countries recently environmental and sustainable aspects have been investigated in addition. In addition to durability also the reactivity of fly ash and the use in road construction is investigated due to the different situation in member states. Some aspects will be introduced and discussed

The experience on the properties and benefits of fly ash are investigated and evaluated differently in the Universities and Highschools of the member states. Background for these differences are national provisions for the use of additions based on national experience. But the scientific background and mostly also test procedures are the same. As Europe is working towards harmonisation research work is always the first step towards such an approach.

The Research Workshop will be held the day before the EUROCOALASH 2014 conference where all interested parties will meet and discuss the most recent regulative, normative and practical developments for CCP use. The workshop is to discuss more deeply about the associated research work and a specific exchange of experience between especially young researchers on selected aspects of CCP research.

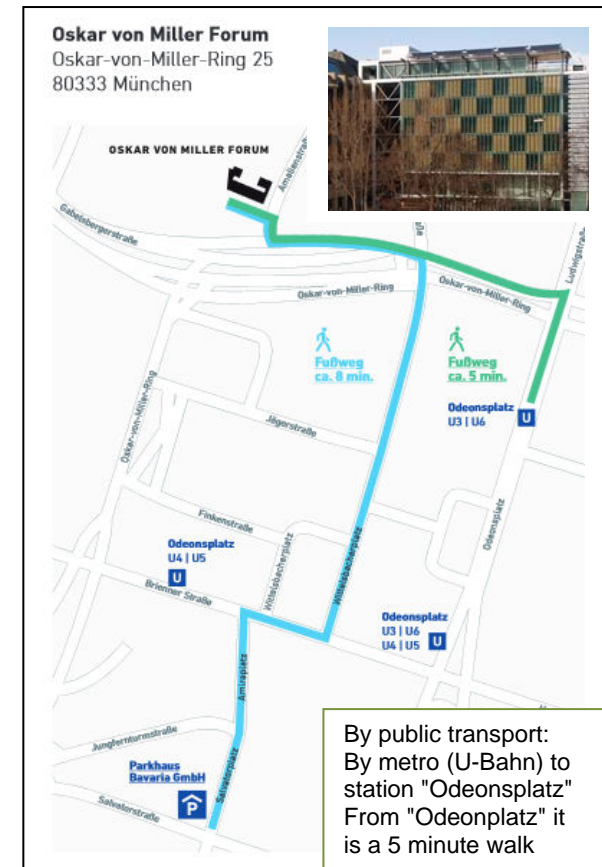
## ECOBA RESEARCH WORKSHOP

PROGRAMME (SUBJECT TO REVISION)

MONDAY – OCTOBER 13, 2014

- 09:00 Registration and Welcome Reception
- 10:00 - CCP Research - Introduction  
10:15 *J. Feuerborn, Ecoba*
- Durability of fly ash concrete
- 10:15 - Sulfate resistance of concrete containing fly ash  
11:00 - state of the art  
*J. Hauße, A. Vollpracht, Institute for Building Materials Research, RWTH Aachen University, Germany*
- 11:00 - Avoiding the Damaging Alkali Silica Reaction with Fly Ash - Long Term Storage Investigations  
11:45 *A. Dressler, L. Urbonas, D. Heinz, cbm Centre of Building Materials, TU Munich, Germany*
- 11:45 - Susceptibility of Fly Ash Concrete to Damaging Alkali Silica Reaction - Performance Testing Conditions  
12.30 *K. Fischer, L. Urbonas, D. Heinz, cbm Centre of Building Materials, TU Munich, Germany*
- 12.30 - Lunch Break  
13.30
- 13:30 - Study on the Initiation and propagation of Reinforcement Corrosion in Fly Ash Concrete Subjected to Chloride Ingress  
14:15 *I. Zafar, T. Sygyiyama, Graduate School/Faculty of Engineering, Hokkaido University, Japan*
- Reactivity and uses
- 14:15 - Surface and bulk characterisation for reactivity evaluation of an ultrafine South African Fly ash  
15:00 *E.M.v.d. Merwe, University of Pretoria, South Africa*  
*R.A. Kruger, Ash Resources, South Africa*
- 15:00 - Calcareous ash in Germany - Characterisation and utilisation / results of joint research projects  
15:45 *J. Feuerborn, VGB Research, Essen, Germany*
- 15:45 - The construction of concrete road pavement with a Calcareous fly ash based hydraulic binder  
16.30 *I. Papayianni, E. Anastasiou, M. Papachristoforou, Aristotle University of Thessaloniki, Thessaloniki, Greece*
- Note: Sessions consist of about 30 minute report and 15 minute discussion each

## Travel information Munich



By car:  
Due to rare parking options nearby please use the "Parkhaus Bavaria"  
From the "Parkhaus" it is a 8 minute walk

Parkhaus Bavaria GmbH  
Salvatorplatz 1|  
80333 München

By public transport:  
By metro (U-Bahn) to station "Odeonsplatz"  
From "Odeonsplatz" it is a 5 minute walk

Direction from:  
- "Marienplatz"  
Line U3 direction Moosach  
Linie U6 direction Garching-Forschungszentrum  
- "Hauptbahnhof" (main station)  
Line U4 direction Arbellapark  
Line U5 direction Neuperlach Süd